

## What is TRIAD?

Translating Research Into Action for Diabetes (TRIAD) is the largest national diabetes study of its kind. For almost five-years, six research centers have been looking at the care received by people with diabetes.

It is estimated that there are 16 million Americans with diabetes. If you completed our survey, then you are one of almost 12,000 Americans chosen randomly. You represent many people. Your input is helping us answer key questions. For example: What can be done to make health care better for people with diabetes?

## What will we do with the information?

We hope to find new ways to improve diabetes care. Of course, all of your information is kept private.

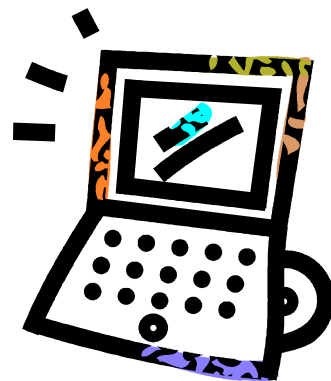
## What's next?

Phase one of the study is almost done. Next, we will contact you during the spring of 2002. We will then ask you to complete a follow-up survey. Your responses will help us find answers to other major questions such as how quality of care changes over time.



Beginning in February 2002, visit the new TRIAD web site for more information and regular updates:

[www.triadstudy.org](http://www.triadstudy.org)



We thank everyone who has taken the time to complete a survey. We look forward to your continued participation!



The [Department of Veterans Affairs](#) has joined the TRIAD study! Six VA facilities will survey 2,500 people with diabetes.

## Moving? Be sure to let TRIAD know!

If you've moved or changed your phone number since we last contacted you, please call us at this toll-free number:

**1-877-648-5119**

## Did you know that...

According to the American Diabetes Association (2001):

- Nearly 6% of the U.S. population has diabetes. Type 2 diabetes is nearing epidemic proportions as Americans live longer and maintain sedentary lifestyles?
- Health care and other costs directly related to diabetes treatment, as well as costs of productivity lost, run \$98 billion annually?
- Each day, approximately 2,200 people are diagnosed with diabetes, or 798,000 people each year?

## Who are the TRIAD research centers?

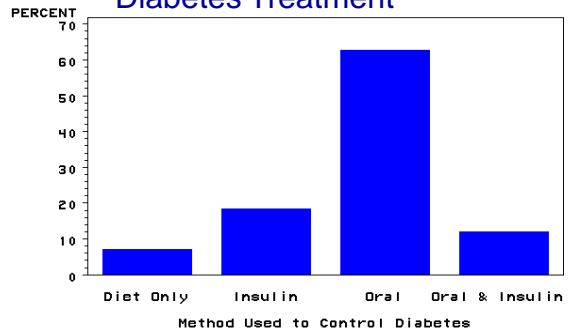
- (1) Pacific Health Research Institute -- Hawaii
- (2) University of California, Los Angeles
- (3) University of Medicine and Dentistry of New Jersey
- (4) Kaiser Foundation Research Institute, Oakland, CA
- (5) Indiana University School of Medicine
- (6) Regents of the University of Michigan

Participants are:

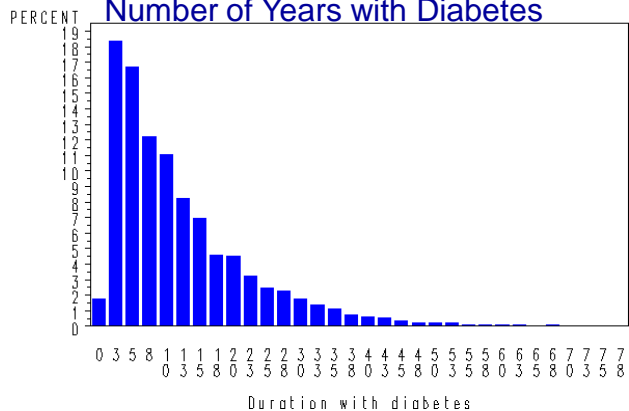
- Male: 47%
- Female: 53%
- Ages: 18-100
- White non Hispanic: 39%
- Black non Hispanic: 15%
- Hispanic: 15%
- Asian/Pacific Islander: 15%
- American Indian/Alaskan: 1%
- Other non Hispanic: 3%
- Unknown/missing: 13%

## TRIAD Demographics

### Diabetes Treatment



### Number of Years with Diabetes



Greetings!  
Happy Holidays  
from the  
TRIAD staff

The TRIAD study is being funded by the Centers for Disease Control and Prevention (CDC) in Atlanta, Georgia, and the National Institute of Diabetes and Digestive and Kidney Diseases (NIDDK) in Bethesda, Maryland.

